



April 1997

EMBARGO: 11:30 AM (CANBERRA TIME) MON 21 APRIL 1997

Business Indicators

Australian Capital Territory

NOTES

FORTHCOMING ISSUES

| <i>ISSUE</i> | <i>RELEASE DATE</i> |
|--------------|---------------------|
| May 1997 | 19 May 1997 |
| June 1997 | 23 June 1997 |

SYMBOLS AND OTHER USAGES

| | |
|------|--|
| ACT | Australian Capital Territory |
| n.a. | not available |
| n.p. | not available for publication |
| p | preliminary |
| * | Represents data with a standard error of greater than 25%. Caution should be exercised when using this data. |
| — | nil or rounded to zero |

INQUIRIES

For further information about statistics in this publication and the availability of related unpublished statistics, contact Kingsley Green on Canberra (06) 207 0286 or any ABS State office.

For information about other ABS statistics and services, please refer to the back of this publication.

Dalma Jacobs
Regional Director
Australian Capital Territory

SUMMARY OF FINDINGS

UPDATED SERIES

Series updated since the March 1997 issue are: State accounts; labour force; job vacancies; industrial disputes; building approvals; retail turnover; tourism accommodation; new motor vehicle registrations; and business expectations. A feature article on underemployed persons in the ACT is included on pages 7 and 8.

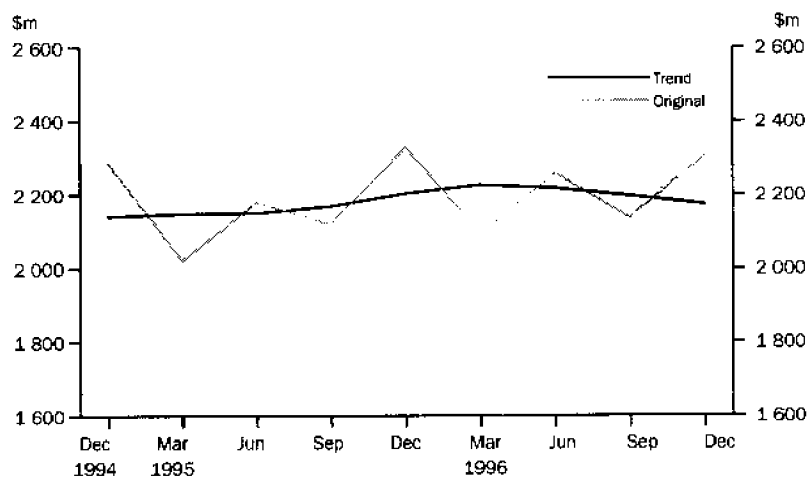
NOTABLE MOVEMENTS

- | | |
|--------------------------|---|
| State accounts | Trend gross State product at average 1989-90 prices for the ACT decreased by 1.0% in the December quarter 1996 to \$2,173 million. Trend gross State product has now fallen for the past three consecutive quarters. The trend State final demand at average 1989-90 prices continued to decline over the last four quarters to \$2,795 million in the December quarter 1996. A 9.7% fall in the trend public gross fixed capital expenditure at average prices was the major contributor to the decline in the December quarter. |
| Labour force | The trend number of persons employed in the ACT has continued to increase for each of the last four months from 152,500 persons in November 1996 to 155,100 persons in March 1997. The trend number of persons unemployed has fallen from 14,400 in October 1996 to 12,400 in March 1997 with the trend unemployment rate decreasing from 8.6% to 7.4%. The trend participation rate in March 1997 was 71.4%, a 0.2 percentage point increase from November 1996. |
| Job vacancies | There were 1,000 job vacancies recorded in the ACT in February 1997; a decrease of 28.6% from November 1996 and down 37.5% on the corresponding month in the previous year. The February 1997 quarter saw job vacancies in the ACT private sector fall 44.4% from 900 vacancies to 500, while vacancies in the public sector increased 25% from 400 vacancies to 500. |
| Industrial disputes | In December 1996, there were 148 working days lost per 1,000 employees in the ACT compared with 131 working days lost per 1,000 employees nationally. For the ACT there was no change from the previous month's figure, while the national figure experienced a 1.6% fall. |
| Housing and construction | <p>The trend number of dwelling units approved in the ACT increased by 2.6% to 201 dwelling units in February 1997. This continues the upward trend over the previous five months. Nationally the total number of dwelling units approved increased by 1.6% in February 1997. The national trend in the number of dwelling units has increased for each of the last 12 months.</p> <p>The value of non-residential building approvals stood at \$12.2 million in February 1997; a decrease of 80.6% from the previous month and 92.5% from February 1996.</p> |

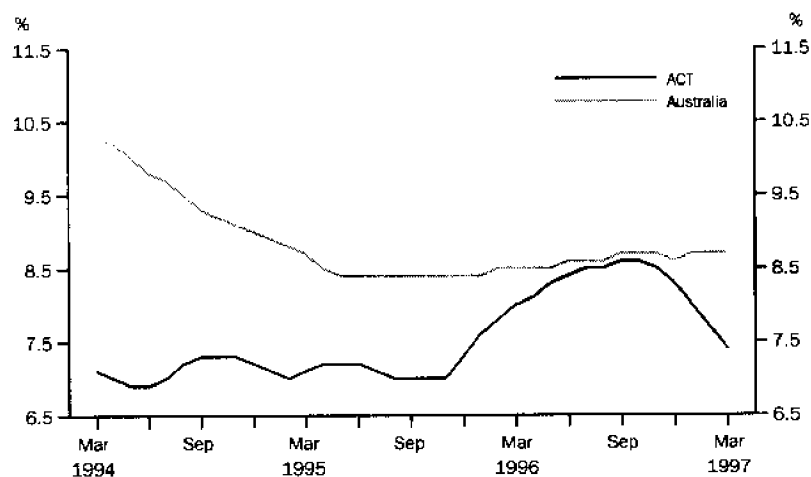
| | |
|-----------------------------|--|
| Retail turnover | The trend estimate for retail turnover in the ACT for February 1997 was \$197.2 million, up slightly on the previous month's figure of \$196.7 million. ACT trend retail turnover increased by 0.3% since the previous month, while the national trend retail turnover experienced a slightly larger increase of 0.6% on the previous month. |
| Tourist accommodation | Room occupancy rates for ACT hotels, motels and guest houses in the December quarter 1996 was 63.1%, up 5.6 percentage points on the previous quarter and down 1.5 percentage points on December quarter 1995. Nationally the room occupancy rate in December quarter 1996 was 59.9%, an increase of 1.1 percentage points on September quarter 1996 and a 0.2 percentage point on December quarter 1995. |
| Motor vehicle registrations | The trend estimate for new motor vehicle registrations for the ACT in February 1997 was 935, up 2.4% on the previous month. The series has now recorded four consecutive months of increase. Nationally, the trend for total new registrations in February 1997 recorded a 1.4% increase on the previous month's figure. |
| Business expectations | Businesses in the ACT expect a short-term increase of 1.3% in the sales of goods and services in the June quarter 1997. This follows on from an anticipated decline of 1.1% in the previous quarter. The expected national growth during the June quarter 1997 is 1.6%. In the medium term (March quarter 1997 — March quarter 1998), growth of 1.7% is expected for the ACT, which is below that of the national expectation of 2.9%. |

SELECTED BUSINESS INDICATORS

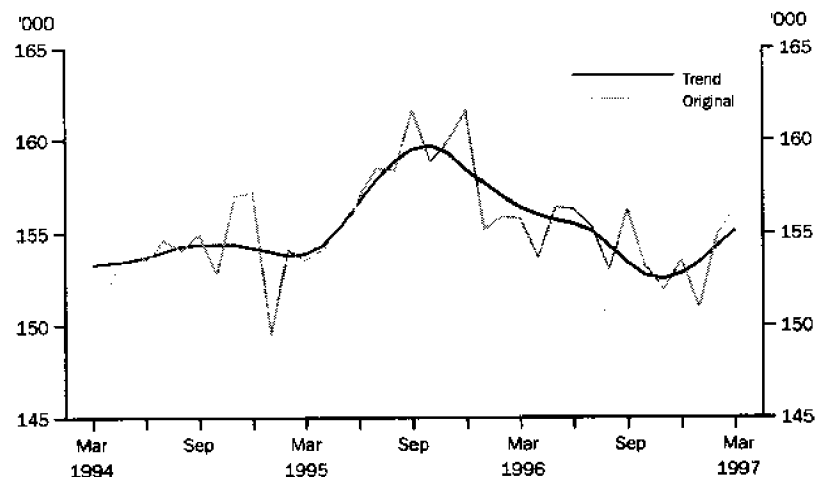
GROSS STATE PRODUCT AT
AVERAGE PRICES



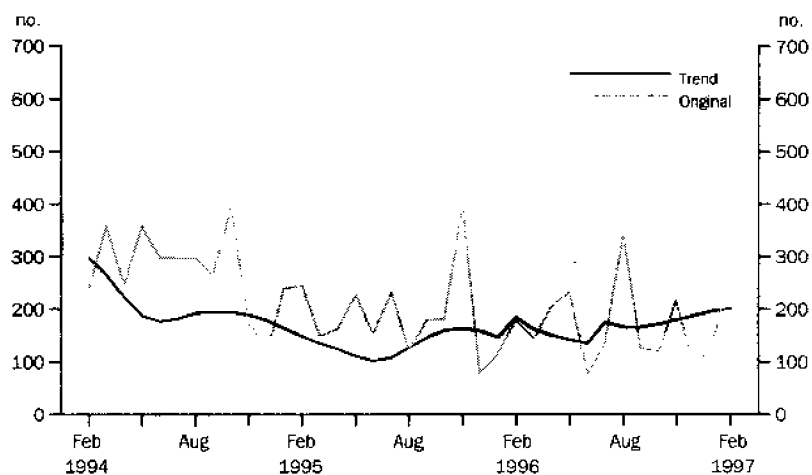
LABOUR FORCE — TREND
UNEMPLOYMENT RATE



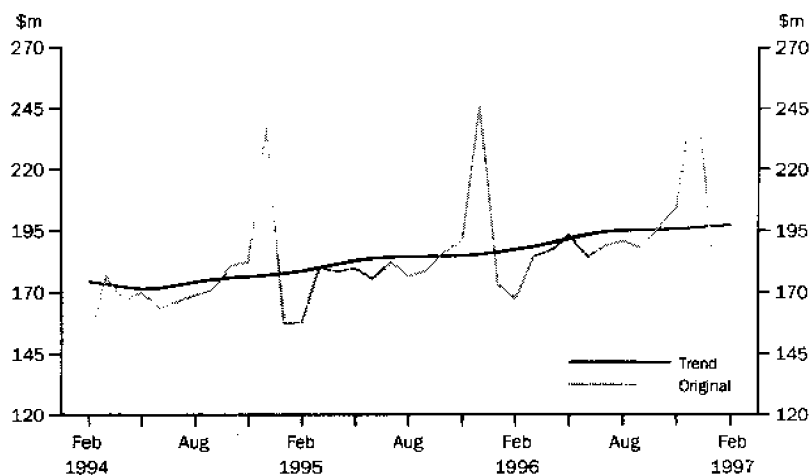
LABOUR FORCE —
EMPLOYMENT



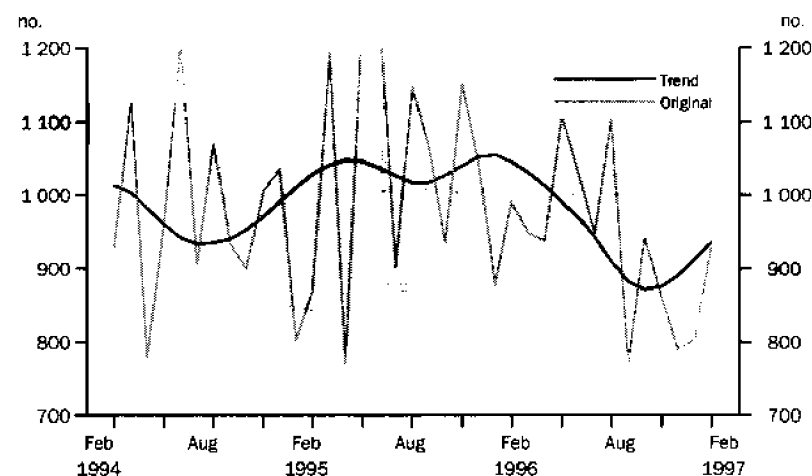
BUILDING APPROVALS —
DWELLING UNITS APPROVED



RETAIL TURNOVER



NEW MOTOR VEHICLE
REGISTRATIONS



FEATURE ARTICLE

UNDEREMPLOYED WORKERS IN THE ACT

In September 1996, 7.2% or 11,285 of the 156,341 employed persons in the ACT aged 15 years and over were involuntary part-time workers, i.e. they worked less than 35 hours in the reference week and would have preferred to work extra hours.

Between September 1995 and September 1996, there was a decrease of 0.4% in the number of involuntary part-time workers in the ACT. There was also a decrease in total employment of 3.2% over the same period. This followed an increase of 31.2% in involuntary part-time workers between September 1994 and September 1995, relative to a 4.3% increase in total employment over the same period.

Some 95% of involuntary part-time workers usually worked part time. The remaining 5% usually worked full time but worked less than 35 hours in the reference week due to economic reasons (e.g. because of insufficient work).

While only 45.6% of fully employed workers were female, some 53.9% of involuntary part-time workers were female. The number of female involuntary part-time workers has decreased by 4.6% since September 1995 while the number of males has increased by 5.1%. Males recorded a higher proportion of involuntary part-time workers in the 15-19 and 25-34 age groups while females recorded a higher proportion in all other age groups.

The proportion of involuntary part-time workers in each of the age groups has changed markedly between September 1995 and September 1996. For instance the proportion of involuntary part-time workers aged 15-19 fell from 21.9% in 1995 to 16.7% in 1996; in the 20-24 age bracket the proportion increased from 24.6% in 1995 to 29.8% in 1996; while the 25-34 age bracket experienced the largest decline, falling from 23.3% to 15.1% over the same period. Some *17.9% of involuntary part-time workers were aged 45 years and over in September 1996, compared to *12.3% in September 1995.

Other interesting characteristics of involuntary part-time workers were:

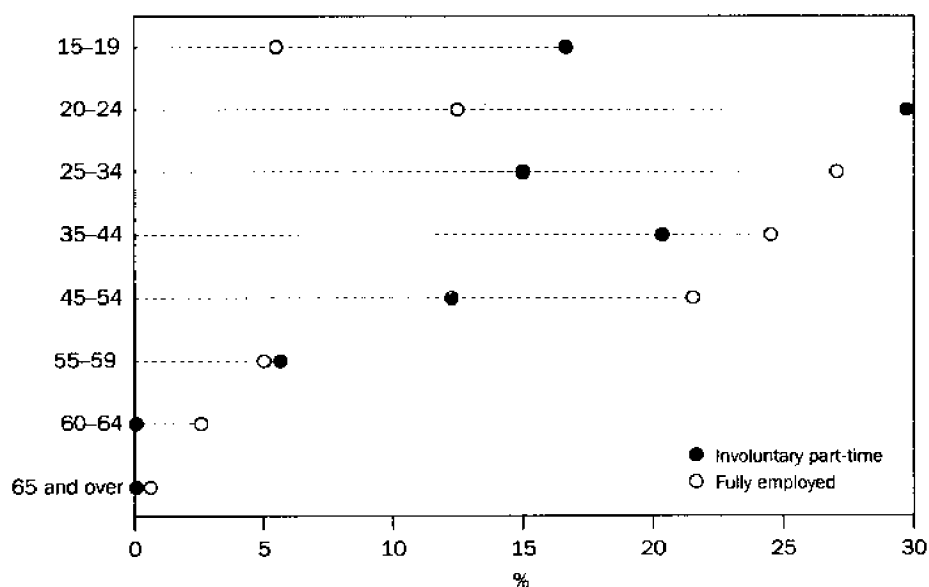
- the most commonly reported hours of work last week were 0-10 hours (44.1%), 11-20 hours (27.2%) and 21-29 hours (19.1%);
- when compared with fully employed workers, a higher proportion were own account workers (*11.5% compared with 5.3%);
- 50.9% of females and 58.9% of males had no post-school qualifications; and
- *4.0% were lone parents (compared with 4.7% of fully employed workers), and another 14.2% were dependent students (compared with 4.8% of fully employed workers).

Most involuntary part-time workers who usually work part time reported that they would like full-time work (55.4%). Males were more likely to want full-time work (56.9%) than females (54.3%).

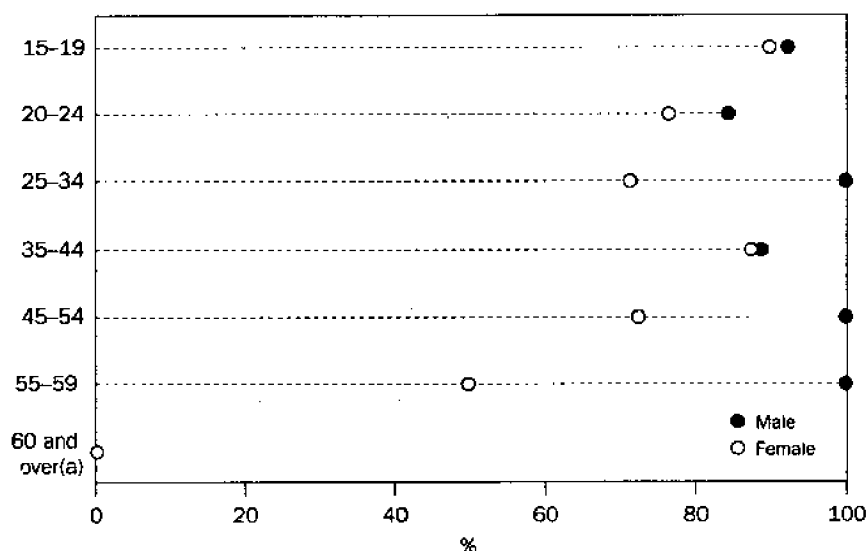
Of all involuntary part-time workers who usually work part time, 82.7% (8,874) had been looking for work with more hours or were available to start such work last week, and *17.3% (1,856) had not been looking for extra work with more hours and were not available to start such work last week. Of those involuntary part-time workers who usually work part time and who were looking for and/or available to start extra work last week, 38.4% wanted 10–19 extra hours of work each week, and 18.7% wanted 20–29 hours.

NOTE: In this feature article * represents data with a standard error of greater than 25%. Caution should be exercised when using this data.

INVOLUNTARY PART-TIME WORKERS AND FULLY EMPLOYED WORKERS BY AGE GROUP, SEPTEMBER 1996



INVOLUNTARY PART-TIME WORKERS LOOKING AND/OR AVAILABLE TO START EXTRA WORK LAST WEEK, BY AGE GROUP, SEPTEMBER 1996



(a) Zero value.

1

AUSTRALIAN BUSINESS EXPECTATIONS: SALES, MARCH QUARTER 1997/DECEMBER QUARTER 1997, EXPECTED AGGREGATE CHANGE

| <i>Period</i> | <i>Australian Capital Territory</i> | <i>Australia</i> |
|---------------------------|---|------------------|
| | % | % |
| Short-term | | |
| Mar qtr 1996-Jun qtr 1996 | 1.8 | 2.3 |
| Jun qtr 1996-Sep qtr 1996 | 0.4 | 1.6 |
| Sep qtr 1996-Dec qtr 1996 | -0.3 | 1.6 |
| Dec qtr 1996-Mar qtr 1997 | -1.1 | 0.4 |
| Mar qtr 1997-Jun qtr 1997 | 1.3 | 1.6 |
| Medium-term | | |
| Mar qtr 1996-Mar qtr 1997 | 2.3 | 4.1 |
| Jun qtr 1996-Jun qtr 1997 | 1.4 | 3.6 |
| Sep qtr 1996-Sep qtr 1997 | 1.5 | 3.1 |
| Dec qtr 1996-Dec qtr 1997 | 2.2 | 3.1 |
| Mar qtr 1997-Mar qtr 1998 | 1.7 | 2.9 |

| Indicator | Unit | Australian Capital Territory | | | Australia | | |
|---|-----------------|------------------------------|-----------------|---------------------------|---------------|-----------------|---------------------------|
| | | Latest figure | Previous period | Change from | Latest figure | Previous period | Change from |
| | | | | Same period previous year | | | Same period previous year |
| | | | | | | | |
| POPULATION, VITAL AND LABOUR | | | | | | | |
| POPULATION Sep qtr 96 | '000 | 308.2 | 0.2 | 1.1 | 18 348.7 | 0.3 | 1.3 |
| Natural increase | no. | 747 | -12.9 | 6.4 | 27 850 | -10.7 | -5.0 |
| Net migration | no. | -28 | -113.7 | -133.7 | 31 671 | 63.8 | 1.9 |
| Total increase | no. | 719 | -32.4 | -8.4 | 59 521 | 17.8 | -1.5 |
| LABOUR FORCE, Mar 97 | | | | | | | |
| Original series | | | | | | | |
| Employed | '000 | 156.3 | 0.9 | 0.3 | 8 393.3 | 0.5 | 1.1 |
| Unemployed | '000 | 12.9 | -16.2 | -17.8 | 845.4 | -6.7 | 4.3 |
| Unemployment rate(a) | % | 7.6 | -1.4 | -1.5 | 9.2 | -0.6 | 0.3 |
| Participation rate(a) | % | 72.1 | -0.5 | -1.8 | 63.7 | -0.2 | 0.1 |
| Long-term unemployed (Feb 97) | no. | 3 444 | 0.6 | 8.6 | 264 144 | 13.9 | 7.7 |
| Long-term unemployed as percentage total unemployed (Feb 97)(a) | % | 22.4 | -0.1 | 1.4 | 29.2 | 2.0 | 0.6 |
| Trend series | | | | | | | |
| Employed | '000 | 155.1 | 0.5 | -0.8 | 8 410.6 | — | 1.2 |
| Unemployed | '000 | 12.4 | -3.1 | -8.1 | 801.4 | 0.4 | 4.0 |
| Unemployment rate(a) | % | 7.4 | -0.3 | -0.6 | 8.7 | — | 0.2 |
| Participation rate(a) | % | 71.4 | 0.1 | -1.9 | 63.5 | — | -0.1 |
| JOB VACANCIES, Feb 97 | '000 | 1.0 | -28.6 | -37.5 | 62.6 | 0.5 | -2.0 |
| INDUSTRIAL DISPUTES IN PROGRESS, Dec 96 | | | | | | | |
| Working days lost | '000 | 0.1 | -90.0 | — | 27.2 | -47.7 | 145.0 |
| Days lost per '000 employees (year ended Dec 96) | no. | 148.0 | — | 1 544.4 | 131.0 | 1.6 | 65.8 |
| BUILDING AND CONSTRUCTION | | | | | | | |
| HOUSING FINANCE, Jan 97 | | | | | | | |
| Secured commitments to individuals for | | | | | | | |
| Original series | | | | | | | |
| Construction of dwellings | \$m | 3.7 | -46.4 | -22.9 | 474.2 | -0.8 | 16.4 |
| Purchase of new dwellings | \$m | 4.4 | -33.3 | -43.6 | 204.2 | 7.0 | 24.5 |
| Purchase of established dwellings | \$m | 47.4 | -7.4 | 18.5 | 3 076.5 | -3.5 | 19.4 |
| Total housing commitments | \$m | 77.7 | -7.4 | 15.3 | 3 754.9 | -2.6 | 19.3 |
| Seasonally adjusted series | | | | | | | |
| Total housing commitments | \$m | 96.2 | 6.3 | 9.7 | 4 607.9 | 10.5 | 18.3 |
| Trend series | | | | | | | |
| Dwelling units financed | no. | 846 | -0.2 | -0.2 | 40 748 | 0.2 | 5.4 |
| Total housing commitments | \$m | 88.7 | 0.7 | 4.2 | 4 306.2 | 1.6 | 15.1 |
| BUILDING APPROVALS, Feb 97 | | | | | | | |
| Original series | | | | | | | |
| Dwelling units | no. | 267 | 97.8 | 49.2 | 10 638 | 5.3 | 5.2 |
| Value of new residential | \$m | 27.2 | 80.1 | 70.0 | 1 058.0 | 5.4 | 11.1 |
| Value of residential alterations and additions | \$m | 3.4 | -17.1 | 3.0 | 197.2 | 4.7 | 11.0 |
| Value of non-residential | \$m | 12.2 | -80.6 | -92.5 | 935.7 | -9.5 | -14.0 |
| Value of total building | \$m | 42.7 | -47.9 | -76.4 | 2 190.9 | -1.5 | -1.2 |
| Trend series | | | | | | | |
| Dwelling units | no. | 201 | 2.6 | 8.6 | 11 649 | 1.6 | 13.9 |
| BUILDING COMMENCEMENTS, Sep qtr 96 | | | | | | | |
| New houses | no. | 210 | -38.6 | -39.3 | 20 461 | -1.7 | -14.1 |
| Value of houses commenced | \$m | 25.6 | -28.7 | -31.0 | 2 202.3 | -0.2 | -9.4 |
| Value of non-residential building commenced | \$m | 108.8 | -26.4 | 76.3 | 2 936.6 | 0.3 | 19.3 |
| Value of total commencements | \$m | 156.2 | -26.7 | 12.9 | 6 556.6 | -2.0 | 1.1 |
| PRICE INDEXES | | | | | | | |
| Established house price index, Dec qtr 96 | (1989-90=100.0) | 126.6 | -0.5 | -1.6 | 114.3 | 0.3 | 1.7 |

For footnotes see end of table.

| Indicator | Unit | Australian Capital Territory | | | Australia | | |
|--|-----------------|------------------------------|-----------------|---------------------------|---------------|-----------------|---------------------------|
| | | Latest figure | Previous period | Change from | Latest figure | Previous period | Change from |
| | | | | Same period previous year | | | Same period previous year |
| PRICES, WAGES AND CONSUMER SPENDING | | | | | | | |
| CONSUMER PRICE INDEX, Dec qtr 96 | | | | | | | |
| Food | (1989-90=100.0) | 122.0 | 1.4 | 2.7 | 119.4 | 0.9 | 3.2 |
| Housing | (1989-90=100.0) | 107.9 | -3.7 | -3.5 | 103.2 | -2.7 | -2.7 |
| Transportation | (1989-90=100.0) | 130.2 | 1.0 | 2.4 | 124.5 | 0.9 | 1.8 |
| All groups | (1989-90=100.0) | 121.4 | — | 1.2 | 120.3 | 0.2 | 1.5 |
| AVERAGE WEEKLY EARNINGS, Nov 96 | | | | | | | |
| Original series | | | | | | | |
| Males | \$ | 769.9 | 1.0 | 2.8 | 679.8 | 0.9 | 2.6 |
| Females | \$ | 561.6 | 2.9 | 8.8 | 447.1 | 0.4 | 4.0 |
| Persons | \$ | 663.9 | 2.5 | 5.0 | 570.0 | 0.6 | 2.8 |
| Trend series | | | | | | | |
| Males | \$ | 770.7 | 1.4 | 3.0 | 680.2 | 0.6 | 2.8 |
| Females | \$ | 566.2 | 2.7 | 9.2 | 450.1 | 1.0 | 4.0 |
| Persons | \$ | 664.5 | 1.9 | 5.0 | 571.9 | 0.6 | 3.1 |
| RETAIL TURNOVER, Feb 97 | | | | | | | |
| Original series | | | | | | | |
| Food retailing | \$m | 69.1 | -6.5 | -7.2 | 3 952.4 | -9.4 | -0.1 |
| Department stores | \$m | 18.1 | -10.0 | 1.7 | 727.6 | -13.5 | -1.3 |
| Hospitality and services | \$m | 26.6 | -6.0 | 2.7 | 1 578.3 | -11.1 | -4.5 |
| All other retailing | \$m | 55.2 | -11.1 | 12.0 | 2 991.7 | -8.7 | 0.8 |
| Total | \$m | 169.0 | -8.4 | 0.9 | 9 250.0 | -9.8 | -0.7 |
| Trend series | | | | | | | |
| Food retailing | '000 | 75.0 | -1.2 | -2.2 | 4 237.1 | 0.3 | 4.0 |
| Department stores | \$m | 24.5 | 0.8 | 3.4 | 991.9 | 1.0 | 2.5 |
| Hospitality and services | \$m | 31.0 | 1.0 | 7.6 | 1 727.2 | 0.8 | -2.9 |
| All other retailing | % | 66.7 | 1.4 | 14.8 | 3 420.7 | 0.8 | 3.2 |
| Total | '000 | 197.2 | 0.3 | 5.3 | 10 376.9 | 0.6 | 2.4 |
| TOURISM AND TRANSPORT | | | | | | | |
| HOTELS, MOTELS AND GUEST HOUSE ACCOMMODATION, Sep qtr 96 | | | | | | | |
| Original series | | | | | | | |
| Room nights | '000 | 197.6 | -8.5 | -6.1 | 9 297.6 | 5.8 | -0.1 |
| Takings at current prices | \$m | 18.2 | -10.3 | -4.2 | 897.1 | 7.3 | 5.3 |
| Takings at 1989-90 prices | \$m | 15.0 | -10.2 | -5.7 | 746.2 | 7.1 | 3.0 |
| Room occupancy rate (Dec qtr 96)(a) | % | 63.1 | 5.6 | -1.5 | 59.9 | 1.1 | 0.2 |
| Seasonally adjusted series | | | | | | | |
| Room nights | '000 | 196.3 | -12.2 | -6.4 | 9 037.5 | -1.5 | 0.2 |
| Takings at current prices | \$m | 18.3 | -11.6 | -4.7 | 876.2 | -1.4 | 5.5 |
| Takings at 1989-90 prices | \$m | 15.1 | -11.7 | -6.2 | 728.9 | -1.6 | 3.2 |
| Trend series | | | | | | | |
| Room nights | '000 | 207.1 | -1.0 | -1.4 | 9 100.8 | -0.5 | 0.9 |
| Takings at current prices | \$m | 19.3 | 0.5 | 1.6 | 887.4 | 0.8 | 7.4 |
| Takings at 1989-90 prices | \$m | 15.9 | 0.6 | -0.6 | 737.0 | 0.3 | 4.9 |
| NEW MOTOR VEHICLE REGISTRATIONS, Feb 97 | | | | | | | |
| Motor vehicles | no. | 927 | 15.4 | -6.4 | 54 861 | 18.8 | 3.1 |
| Seasonally adjusted motor vehicles | no. | 999 | 0.8 | -5.8 | 58 569 | 5.4 | 6.9 |
| Trend motor vehicles | no. | 935 | 2.4 | -10.5 | 56 468 | 1.4 | 5.5 |

For footnotes see end of table.

| Indicator | Unit | Australian Capital Territory | | | Australia | | |
|---|------|------------------------------|-----------------|---------------------------|---------------|-----------------|---------------------------|
| | | Latest figure | Previous period | Change from | Latest figure | Previous period | Change from |
| | | | | Same period previous year | | | Same period previous year |
| | | | | | | | |
| AGGREGATE INDICATORS | | | | | | | |
| STATE ACCOUNTS, Dec qtr 96(b) | | | | | | | |
| Original series | | | | | | | |
| Gross State product at av. 1989-90 prices | \$m | 2 306 | 8.0 | -0.9 | 119 502 | 9.5 | 3.8 |
| Gross State product at current prices | \$m | 2 848 | 7.0 | 3.6 | 135 799 | 9.9 | 5.3 |
| State final demand at av. 1989-90 prices | \$m | 2 907 | 4.8 | -7.2 | 114 162 | 6.5 | 3.5 |
| Private final consumption expenditure | \$m | 1 523 | 5.5 | 4.2 | 81 884 | 5.9 | 3.7 |
| Private gross fixed capital expenditure | \$m | 221 | 12.2 | -5.2 | 22 500 | 9.6 | 9.9 |
| Trend series | | | | | | | |
| Gross State product at av. 1989-90 prices | \$m | 2 173 | -1.0 | -1.4 | 111 471 | 0.6 | 3.2 |
| Gross State product at current prices | \$m | 2 721 | 0.3 | 4.8 | 127 373 | 1.0 | 4.9 |
| State final demand at av. 1989-90 prices | \$m | 2 795 | -2.1 | -7.2 | 109 105 | 0.5 | 3.1 |
| Private final consumption expenditure | \$m | 1 444 | 1.0 | 4.0 | 77 983 | 0.6 | 3.9 |
| Private gross fixed capital expenditure | \$m | 199 | 0.5 | 2.1 | 21 077 | 1.4 | 9.1 |

(a) Change shown in terms of percentage points.

(b) State estimates are not comparable to national estimates for the June quarter 1995 due to revised aggregates in *Australian National Accounts, State Accounts* (Cat. no. 5242.0).

Source: ABS Catalogue nos: 3101.0, 5242.0, 5609.0, 6202.0, 6203.0, 6302.0, 6321.0, 6354.0, 6401.0, 6408.0, 6416.0, 8501.0, 8634.0, 8635.8, 8731.0, 8752.0, 9214.0, 9301.0.

| Indicator | Unit | Latest period | NSW | Vic. | Qld | SA | WA | Tas. | NT | ACT | Aust. |
|---|---------|---------------|---------|---------|---------|---------|---------|-------|-------|-------|----------|
| POPULATION | '000 | Sep qtr 96 | 6 190.2 | 4 541.0 | 3 354.7 | 1 479.2 | 1 762.7 | 473.4 | 177.7 | 308.2 | 18 348.7 |
| LABOUR FORCE | | | | | | | | | | | |
| Employed persons (trend) | '000 | Mar 97 | 2 816.6 | 2 100.5 | 1 543.2 | 664.0 | 854.6 | 195.7 | 82.4 | 155.1 | 8 410.6 |
| Unemployment rate (trend) | % | Mar 97 | 8.0 | 9.0 | 9.9 | 9.4 | 7.6 | 10.8 | 5.6 | 7.4 | 8.7 |
| STATE ACCOUNTS(a) | | | | | | | | | | | |
| Gross State product at 1989-90 prices (trend) | \$m | Dec qtr 96 | 38 033 | 29 150 | 18 326 | 7 705 | 12 760 | 2 210 | 1 195 | 2 173 | 111 471 |
| Gross State product at current prices (trend) | \$m | Dec qtr 96 | 44 518 | 33 424 | 20 467 | 8 949 | 13 601 | 2 651 | 1 318 | 2 721 | 127 373 |
| BUILDING APPROVALS | | | | | | | | | | | |
| Dwelling units approved | no. | Feb 97 | 3 674 | 2 194 | 2 700 | 472 | 1 047 | 153 | 131 | 267 | 10 638 |
| Dwelling units approved (trend) | no. | Feb 97 | 4 163 | 2 288 | 2 841 | 473 | 1 263 | 154 | 154 | 201 | 11 649 |
| Value of non-residential building approved | \$m | Feb 97 | 241.5 | 334.9 | 140.2 | 53.1 | 117.8 | 12.5 | 23.7 | 12.2 | 935.7 |
| Value of all buildings approved | \$m | Feb 97 | 723.1 | 615.9 | 405.8 | 102.6 | 231.4 | 29.5 | 40.0 | 42.7 | 2 190.9 |
| ENGINEERING CONSTRUCTION | | | | | | | | | | | |
| Value of engineering construction work done | \$m | Sep qtr 96 | 1 303.7 | 519.8 | 877.4 | 139.1 | 735.0 | 49.4 | 59.0 | 35.9 | 3 719.3 |
| AVERAGE WEEKLY EARNINGS | | | | | | | | | | | |
| Full-time adult ordinary time (trend) | \$ | Nov 96 | 720.7 | 675.4 | 643.2 | 637.8 | 687.2 | 644.3 | 687.3 | 798.1 | 686.5 |
| RETAIL TRADE | | | | | | | | | | | |
| Retail turnover (trend) | \$m | Feb 97 | 3 677.2 | 2 457.9 | 1 869.7 | 763.9 | 1 051.3 | 248.5 | 111.0 | 197.2 | 10 376.9 |
| HOTELS, MOTELS & GUEST HOUSE ACCOMMODATION | | | | | | | | | | | |
| Room nights occupied (trend) | '000 | Sep qtr 96 | 3,105.2 | 1 503.0 | 2 394.9 | 513.3 | 835.2 | 255.2 | 286.8 | 207.1 | 9 100.8 |
| NEW MOTOR VEHICLE REGISTRATIONS | | | | | | | | | | | |
| Trend | no. | Feb 97 | 19 506 | 14 151 | 10 285 | 3 788 | 5 975 | 1 161 | 667 | 935 | 56 468 |
| | Unit | Latest period | Syd. | Melb. | Bris. | Adel. | Perth | Hob. | Dar. | Canb. | Aust. |
| CONSUMER PRICE INDEX | | | | | | | | | | | |
| Food | (b) | Dec qtr 96 | 120.0 | 118.4 | 118.0 | 120.7 | 120.8 | 120.6 | 118.8 | 122.0 | 119.4 |
| Housing | (b) | Dec qtr 96 | 107.7 | 96.7 | 109.6 | 100.5 | 98.1 | 104.8 | 120.6 | 107.9 | 103.2 |
| Transportation | (b) | Dec qtr 96 | 125.4 | 124.1 | 123.3 | 125.5 | 122.6 | 121.8 | 122.3 | 130.2 | 124.5 |
| All Groups | (b) | Dec qtr 96 | 120.4 | 119.9 | 120.8 | 122.6 | 118.4 | 121.3 | 121.7 | 121.4 | 120.3 |
| Average retail prices (cents) | | | | | | | | | | | |
| Milk, carton, supermarket sales | 1 litre | Dec qtr 96 | 115 | 126 | 115 | 116 | 125 | 120 | 116 | 112 | n.a. |
| Bread, white loaf, sliced, supermarket sales | 680 g | Dec qtr 96 | 203 | 202 | 186 | 157 | 174 | 170 | 194 | 192 | n.a. |
| Beef, rump steak | 1 kg | Dec qtr 96 | 1185 | 1081 | 1041 | 1061 | 1051 | 1088 | 1237 | 1022 | n.a. |
| Chicken, frozen | 1 kg | Dec qtr 96 | 349 | 365 | 329 | 375 | 338 | 393 | 356 | 330 | n.a. |
| Potatoes | 1 kg | Dec qtr 96 | 97 | 102 | 82 | 73 | 124 | 87 | 104 | 92 | n.a. |
| Coffee, instant (jar) | 150 g | Dec qtr 96 | 575 | 563 | 563 | 513 | 559 | 632 | 579 | 569 | n.a. |
| Scotch nip, public bar | 30 ml | Dec qtr 96 | 317 | 285 | 252 | 343 | 333 | 246 | 312 | 275 | n.a. |
| Private motoring petrol | | | | | | | | | | | |
| Leaded | 1 litre | Dec qtr 96 | 75.6 | 74.4 | 66.7 | 76.1 | 77.2 | 78.3 | 80.3 | 77.8 | n.a. |
| Unleaded | 1 litre | Dec qtr 96 | 73.4 | 72.2 | 64.5 | 73.7 | 75.1 | 76.2 | 78.3 | 75.6 | n.a. |

(a) State estimates are not comparable to national estimates for the June quarter 1995 due to revised aggregates in *Australian National Accounts, State Accounts* (Cat. no. 5242.0).

(b) Base year: 1989-90=100.0.

| Indicator | Unit | Latest period | NSW | Vic. | Qld | SA | WA | Tas. | NT | ACT | Aust. |
|---|---------|---------------|-------|-------|-------|-------|-------|-------|-------|-------|-------|
| POPULATION | '000 | Sep qtr 96 | 0.3 | 0.2 | 0.5 | 0.1 | 0.4 | — | 0.1 | 0.2 | 0.3 |
| LABOUR FORCE | | | | | | | | | | | |
| Employed persons (trend) | '000 | Mar 97 | — | — | — | 0.2 | 0.1 | 0.2 | — | 0.5 | — |
| Unemployment rate (trend) | % | Mar 97 | — | — | 0.1 | — | — | 0.1 | 0.1 | -0.3 | — |
| STATE ACCOUNTS(a) | | | | | | | | | | | |
| Gross State product at 1989-90 prices (trend) | \$m | Dec qtr 96 | 0.9 | 0.7 | 1.1 | 0.1 | 0.6 | -0.5 | 1.0 | -1.0 | 0.6 |
| Gross State product at current prices (trend) | \$m | Dec qtr 96 | 1.4 | 1.5 | 1.3 | 0.5 | 0.4 | 0.1 | 1.3 | 0.3 | 1.0 |
| BUILDING APPROVALS | | | | | | | | | | | |
| Dwelling units approved | no. | Feb 97 | -2.5 | 2.3 | 20.6 | 34.5 | -11.4 | — | -3.0 | 97.8 | 5.3 |
| Dwelling units approved (trend) | no. | Feb 97 | 3.8 | 2.2 | 1.2 | -1.7 | -1.6 | -3.1 | -1.9 | 2.6 | 1.6 |
| Value of non-residential building approved | \$m | Feb 97 | -41.5 | 46.8 | -30.7 | 26.7 | 76.6 | 14.7 | 203.8 | -80.6 | -9.5 |
| Value of all buildings approved | \$m | Feb 97 | -18.2 | 23.4 | -5.7 | 28.1 | 15.4 | 10.9 | 78.6 | -47.9 | -1.5 |
| ENGINEERING CONSTRUCTION | | | | | | | | | | | |
| Value of engineering construction work done | \$m | Sep qtr 96 | -9.2 | -20.5 | 9.5 | -38.5 | -13.3 | -28.7 | 23.2 | -10.0 | -9.8 |
| AVERAGE WEEKLY EARNINGS | | | | | | | | | | | |
| Full-time adult ordinary time (trend) | \$ | Nov 96 | 1.2 | 1.0 | 1.7 | 0.4 | -0.1 | 1.2 | 1.2 | 1.7 | 1.1 |
| RETAIL TRADE | | | | | | | | | | | |
| Retail turnover (trend) | \$m | Feb 97 | 0.3 | 1.1 | 0.6 | 0.3 | 1.1 | 0.2 | -0.3 | 0.3 | 0.6 |
| HOTELS, MOTELS & GUEST HOUSE ACCOMMODATION | | | | | | | | | | | |
| Room nights occupied (trend) | '000 | Sep qtr 96 | -0.8 | 0.1 | -0.5 | -1.1 | 0.7 | -1.8 | 1.3 | -1.0 | -0.5 |
| NEW MOTOR VEHICLE REGISTRATIONS | | | | | | | | | | | |
| Trend | no. | Feb 97 | 1.8 | 1.5 | — | 3.1 | 1.5 | -1.7 | 2.9 | 2.4 | 1.4 |
| | Unit | Latest period | Syd. | Melb. | Bris. | Adel. | Perth | Hob. | Dar. | Canb. | Aust. |
| CONSUMER PRICE INDEX | | | | | | | | | | | |
| Food | (b) | Dec qtr 96 | 1.5 | 0.8 | 0.3 | 1.3 | 0.4 | 0.5 | -0.3 | 1.4 | 0.9 |
| Housing | (b) | Dec qtr 96 | -2.4 | -2.9 | -2.5 | -2.9 | -2.9 | -2.4 | -0.9 | -3.7 | -2.7 |
| Transportation | (b) | Dec qtr 96 | 1.1 | 0.8 | 0.9 | 0.9 | 0.5 | 1.8 | 0.3 | 1.0 | 0.9 |
| All Groups | (b) | Dec qtr 96 | 0.2 | 0.3 | 0.2 | 0.3 | 0.1 | 0.2 | 0.1 | 0.0 | 0.2 |
| Average retail prices (cents) | | | | | | | | | | | |
| Milk, carton, supermarket sales | 1 litre | Dec qtr 96 | 0.9 | 0.8 | 0.9 | 1.8 | 0.8 | — | — | 2.8 | n.a. |
| Bread, white loaf, sliced, supermarket sales | 680 g | Dec qtr 96 | 4.1 | 5.2 | -3.6 | 1.9 | -5.4 | 1.8 | — | 5.5 | n.a. |
| Beef, rump steak | 1 kg | Dec qtr 96 | -2.9 | -2.3 | -1.4 | -5.5 | -2.9 | 1.3 | -4.0 | -2.5 | n.a. |
| Chicken, frozen | 1 kg | Dec qtr 96 | 13.7 | 3.7 | -3.8 | 1.6 | -2.3 | -1.0 | -7.0 | 2.5 | n.a. |
| Potatoes | 1 kg | Dec qtr 96 | 12.8 | 8.5 | -8.9 | 9.0 | 3.3 | 11.5 | -4.6 | 10.8 | n.a. |
| Coffee, instant (jar) | 150 g | Dec qtr 96 | 0.5 | -0.9 | -1.6 | 0.8 | -2.6 | 2.4 | 2.5 | 0.5 | n.a. |
| Scotch nip, public bar | 30 ml | Dec qtr 96 | — | 0.7 | 0.4 | 4.3 | 2.8 | 2.1 | 0.6 | -2.5 | n.a. |
| Private motoring petrol | | | | | | | | | | | |
| Leaded | 1 litre | Dec qtr 96 | 3.8 | 1.1 | 3.6 | 3.4 | 3.5 | 2.8 | 1.1 | 2.1 | n.a. |
| Unleaded | 1 litre | Dec qtr 96 | 3.8 | 1.0 | 3.7 | 3.4 | 3.6 | 2.8 | 1.2 | 2.2 | n.a. |

(a) State estimates are not comparable to national estimates for the June quarter 1995 due to revised aggregates in Australian National Accounts, State Accounts (Cat. no. 5242.0).

(b) Base year: 1989-90=100.0.

For more information . . .

The ABS publishes a wide range of statistics and other information on Australia's economic and social conditions. Details of what is available in various publications and other products can be found in the ABS Catalogue of Publications and Products available from all ABS Offices.

ABS Products and Services

Many standard products are available from ABS bookshops located in each State and Territory. In addition to these products, information tailored to the needs of clients can be obtained on a wide range of media by contacting your nearest ABS Office. The ABS also provides a Subscription Service for standard products and some tailored information services.

National Dial-a-Statistic Line

0055 86 400

Steadycom P/L: premium rate 25c/20 secs.

This number gives 24-hour access, 365 days a year, for a range of important economic statistics including the CPI.

Internet

<http://www.abs.gov.au>

A wide range of ABS information is available via the Internet, with basic statistics available for each State, Territory and Australia. We also have Key National Indicators, ABS product release details and other information of general interest.

Sales and Inquiries

Keylink STAT.INFO/ABS
X.400 (C:Australia,PUB:Telememo,O:ABS,FN:STAT,SN:INFO)
Internet stat.info@abs.telememo.au

National Mail Order Service (06) 252 5249
Subscription Service 1800 02 0608

| | Information Inquiries | Bookshop Sales |
|-----------|-----------------------|----------------|
| SYDNEY | (02) 9268 4611 | (02) 9268 4620 |
| MELBOURNE | (03) 9615 7755 | (03) 9615 7755 |
| BRISBANE | (07) 3222 6351 | (07) 3222 6350 |
| PERTH | (09) 360 5140 | (09) 360 5307 |
| ADELAIDE | (08) 8237 7100 | (08) 8237 7582 |
| CANBERRA | (06) 252 6627 | (06) 207 0326 |
| HOBART | (03) 6222 5800 | (03) 6222 5800 |
| DARWIN | (08) 8943 2111 | (08) 8943 2111 |



Client Services, ABS, PO Box 10, Belconnen ACT 2616

Produced by the Australian Government Publishing Service
© Commonwealth of Australia 1997

Recommended retail price: \$14.00



2130380004973

ISSN 1320-808X